

# BY HAND AND EYE

The official newsletter of the Sydney Woodturners Guild Inc.

**November 09'**

Close off dates for articles for November  
BH & E will be Friday 12th December 2009 Edited by Scott Rollo

## HEADLINES

Triton respirator mod for better performance and battery life

Economical shop made sharpening system for your chisels!

Woodturning Tips & Tricks section and a new Internet links page for you!

## IN THIS ISSUE:

\*\*Views expressed by contributors are not necessarily those of the guild\*\*

Presidents Message	2
Editorial Comment	3-4
Triton Respirator Modifications	5-7
Just for Laughs	8
Tips & Tricks	9
Shop made sharpening jig for chisels	10-15
Ernie Newman Woody quiz	15-16
For Sale....	16
A Country Woodturner	17
Abrasive grading for Sandpaper	18
An appeal from Ernie Newman	19-21
Internet links for the woodturner	22
Guild & Affiliate calender of events	23-25
Affiliate News	26-38
Guild Contacts	39

The AGM for the Guild has recently been held and all of the retiring executive have been re-elected for another year. I would like to thank a few key people for their efforts in running the Guild last year and I look forward to working with them again this year.

Chris Dunn as Secretary of the Guild does a huge amount of work plus we have had his involvement as usual in organising the Guild's involvement in the WWW show. Most members probably aren't aware of how much work Chris does for us, but I would like to acknowledge this here and give him my thanks for his support to me.

Similarly Fred Warr as Treasurer does a great job behind the scenes in controlling our finances (always a controversial job!), organising our insurance and lot's of other organisational activities.

I would also like to thank Alex Bendelli as Vice President, Scott Rollo as BH&E Editor, Ken Sullivan as Membership Secretary and Warren Rankin as Public Officer and Education Officer. These roles are extremely important to the successful running of the Guild and often require a large amount of work from these people.

I need also to thank the various Association representatives who comprise the Guild Committee. They have an important role in conveying their Associations' thoughts, comments and requests and feeding information back to their members. Every member of the Guild has an opportunity to have their say through their representative, and these representatives are actively involved in all decision making for the Guild. These can be difficult roles at times.

In the year coming up, the Guild faces similar challenges to this past year. Membership has dropped slightly but the Associations who are gaining members are often achieving this through being out in public demonstrating or running BBQs at hardware stores. The Guild, as well as many Associations, is having trouble finding people to do what needs to be done. The same faces are putting their hands up and we do need some of the newer members to become more involved.

Planning must start soon for Woodturn 2010 if we determine to run it (the questionnaire results indicate that most members do see it being worth continuing). We will need new people to help organise and run it and we will need to determine the best format for it. If you are interested, please contact me or let your Guild rep know.

The Guild bi-monthly meetings at the various Association meetings have been moderately successful this year. Those people from other Associations who have travelled to the meetings, have always enjoyed themselves and learnt something new. It has also brought together people from different Associations who may not have had much contact otherwise. From my visits to other Associations, I believe that the standard of woodturning within the Guild is rising. There are always some amazing pieces on display that show technical complexity, good designs and very good finishing. Even beginners are now being successfully encouraged to try different ideas and styles and to show their accomplishments off. I encourage all members to look at the dates for next year and try and get to at least one meeting in the year.

Safe Turning.

Do you struggle with the cost of your chosen hobby? Many do...and if you're reading this there's a fair bet that you are at the very least, interested in Woodturning. Let's face it on the surface it appears that woodturning is a bit pricey. But let's break it down...what is it that costs so much? Well for starters you've got the essential, no way you cannot have it – the lathe. Now you can spend a little on a basic Chinese lathe (hafco, carbatec, Sherwood etc.) or you can spend (all relative of course) a lot.

Lathes can run you from \$200 to well...the sky's the limit for something like a Oneway behemoth from America, but there is a lot in between and something for everyone can easily be found. The variety is varied and a lot depends on your situation. Not everyone has a large shed in which to carry out their turning, others use a midi lathe due to its convenient size. One thing to bear in mind is that lathes generally last a very long time, so buying something older is a really viable alternative to new. There are lathes made in Australia and these are generally good value for money. The big Woodfast lathes are made in South Australia and are solid (HEAVY!) feature rich and represent reasonable value for money and something you could use your entire woodturning career. Bruce Leadbeater sells his Leady lathes and represent great value for money and like the Woodfast, will do you for most of your woodturning career. There are plenty around if you want to check one out. The big woodworking shops and the not so big ones will have lathes you can touch, feel and have a play with. Some will appear rock solid and others flimsy by comparison – you will know when you find the right one – something will click and you'll be set!

The thing to bear in mind is that there is a burgeoning trade in second-hand lathes within most clubs, so you can save yourself a motza over the price of a new lathe by purchasing a second-hand unit from someone at your club, or someone perhaps who has recently left your club or quit woodturning. Or buy something brand new...totally up to you and your circumstance. Just remember that if you are interested in buying a lathe, there's a fair bet that your club or someone within your club owns the lathe that you are interested in so you could “test drive” a couple of different models to see which one suits your requirement.

So.... at some point you would like to buy a lathe. Just beware going in that most, if not all woodturners will own more than one lathe in their lifetime. Whether its capacity, electronic speed adjustment or features, most people will “trade up” somewhere along the way...but don't stress about it and seek the advice of the experienced turners within your club who can guide you in your purchase. It is worth remembering that old is not necessarily bad...many older lathes are sturdier, made of cast iron and have the weight to make them less prone to chatter and unwanted vibrations. So it's up to you, buy new, buy second-hand, but buy something...

Now there are many more things the woodturner needs long term but to get up and running, you need three things: Lathe, wood and a woodturning chisel. Let's assume you've paid your hard earned for a new/second-hand lathe and you have some wood you've been saving. The next thing you'll need is chisels...and there are more choices for chisels than there are for the lathe...a seemingly endless array of choices for you to be confused over...but speak to the experienced members of your club and you'll probably get by with a handful or six...now you can rush out and buy up the finest turning chisels in a lovely box full of made in the UK chisels and drop a lazy \$500. But being the intrepid turner you are, it will be a fair bit cheaper if you buy unhandled chisels and make your handles yourself! Not only will you have a constant reminder of your handy

work but you can tailor them to your own design and give yourself the corporate look of all your turning tools looking the same...That will save you some money (especially if you have some nice wood already at home for the handles) and give you some early on confidence that beginner woodturners need to have. If you are 'handy' around the workshop then you can save significantly more money by making some things yourself. For example, I had the standard toolrest that comes with most lathes – that is a 300mm long toolrest. I had a project that required a much longer toolrest and when I checked the price of these units (~\$75) I immediately started looking for an option. Well I won't bore you with the details but I decided that it would be more "cost effective" to make it myself...now all it takes is a welder and some creative juices...would you believe that for \$23 worth of steel I made a 450mm toolrest, a 150mm toolrest and an S shaped toolrest for bowls...not bad considering that what I made would cost close to \$250 bought at the shop. There is nothing like the satisfaction of making tools yourself and, let's face it, you are saving yourself a good amount of coin...

The key to being frugal with your woodturning is to see items not as they are, but how they can fit into your workshop in a different form. For example, you may have seen around or have a LED light on a gooseneck that you may use for whatever...when hollowing out a vase for example it would be useful to see inside...these flexible lights can be incredibly bright and don't move around a lot...and fantastically illuminate the inside of your turning.

Generally speaking there are a lot of chisels you could make yourself given a push in the right direction. Places like McJings sell high speed steel at extremely reasonable prices that can be the basis of a chisel...here's a story of two options. Example one: a Hamlet 1 ¼ " square nosed scraper from carbatec is \$102.00. a good price for a very good British made scraper. Now it comes with a tapered tang that looks nice and it comes with a nicely turned wooden handle. Good but a bit pricey for most...Example two: now assuming that you've got a nice piece of wood at home for the handle you need a small piece of, say, 10mm mild steel rod and your cutting steel. McJings sell a piece of M2 HSS bar stock 8mm X 30mm X 200mm for \$36.....you cut a slot in the mild steel rod to "hold" the bar stock, weld it to the barstock, drill a 10mm hole in your turned handle and in the words of those TV shows...easy done!!! Well not really but I'll document that another time...cost would be about \$40. It does not take a lot to think outside the square as long as you have access to a welder and some basic hand and power tools.

In the coming months I will showcase the techniques that I have used to make rather than buy some of my tools. They are reasonably simple to make with common hand and power tools and will leave you with a fair dose of self satisfaction.

Remember turning is good. Turn every day you can!

p.s. Congratulations to the Guild Committee being elected unopposed. We are in good hands with the current crop of people steering the ship...

The Australian Woodworker magazine published my review of the Triton respirator PRA001 in August 2005 on page 74 of AWW#122. At that time the respirator had newly appeared on the market. Since then I have used it while undertaking all my woodturning projects because it very effectively filters out the dust. However, due to the passage of time and because of occasional periods of non-use, the battery pack was starting to show its age. It did not maintain its charge and therefore had a reduced usage time. I anticipated that their replacement would be expensive when the purchase price of the substitute cells, labour for their installation and shipping costs are all taken into account. I contacted Triton and the Triton club requesting a quotation for repairs and advice on how best to ameliorate the problem. Unfortunately, they failed to respond. This led me to utilise the motto which says that if you want to have a job done well, do it yourself (if you can!).

The purpose of this article is educational and is suitable for those who believe that they may benefit with enhanced performance through a cost-effective modification. To achieve a satisfactory outcome, though, you must be adept in handling a soldering iron, be able to read a circuit diagram and be knowledgeable in tracing existing wiring (otherwise ask a friend with such skills).

The PRA brochure hints that the internal battery is a set of NiCd cells delivering a nominal 6V to the fan motor. One would expect some loss of charge with age due to various irreversible chemical changes. When the battery fails, normally the whole pack is replaced. However my previous experience in refurbishing batteries for portable drills is that usually one or two cells in the battery fail rather than all of them simultaneously. The remaining cells can usually last a few more years.

In the absence of a circuit diagram, I needed to open the respirator and trace the wiring. If you wish to attempt to modify your respirator, I suggest you first trace the internal wiring lest Triton changed their wiring colours for different production batches. On opening the respirator I found a small printed circuit board (PCB) holding the charging circuit and five D size 5000mA-hour cells ( $5 * 1.2 = 6\text{Volts}$ ). Two of the cells are easily accessible whereas the other three are packed inside a closed compartment. I costed the NiCd battery from electronics retailers at about \$13 each. Unfortunately the cell fitted with solder tags was not readily available as well as being more expensive. Hence, I chose to follow another line of modification and fashion an external battery pack. A NOTE OF CAUTION: never solder directly onto the cell's button terminal as the heat can cause damage to the internal cell!!

I reproduce here the circuit I traced. The small PCB for the charger is noted in the diagram but its internal details are irrelevant for the purpose of this project and therefore were not traced.

After several tests, I found two cells were failing. The PRA was still usable but for a shorter period than the original 4~5 hours. I had three choices:

- to replace all five internal cells with new cells, or
- to delete the internal cells completely and replace them with an external battery pack, or
- to keep the internal cells for short period use and augment/swap it with an external battery pack for longer jobs.

I decided on the last option which allows me to extract the maximum usage from all the original internal cells until, at some future date, they have all finally failed. At that time I can then reconsider replacing all the internal cells concurrently based on the hope that a supplier of less expensive NiMH or NiCd cells can be sourced.





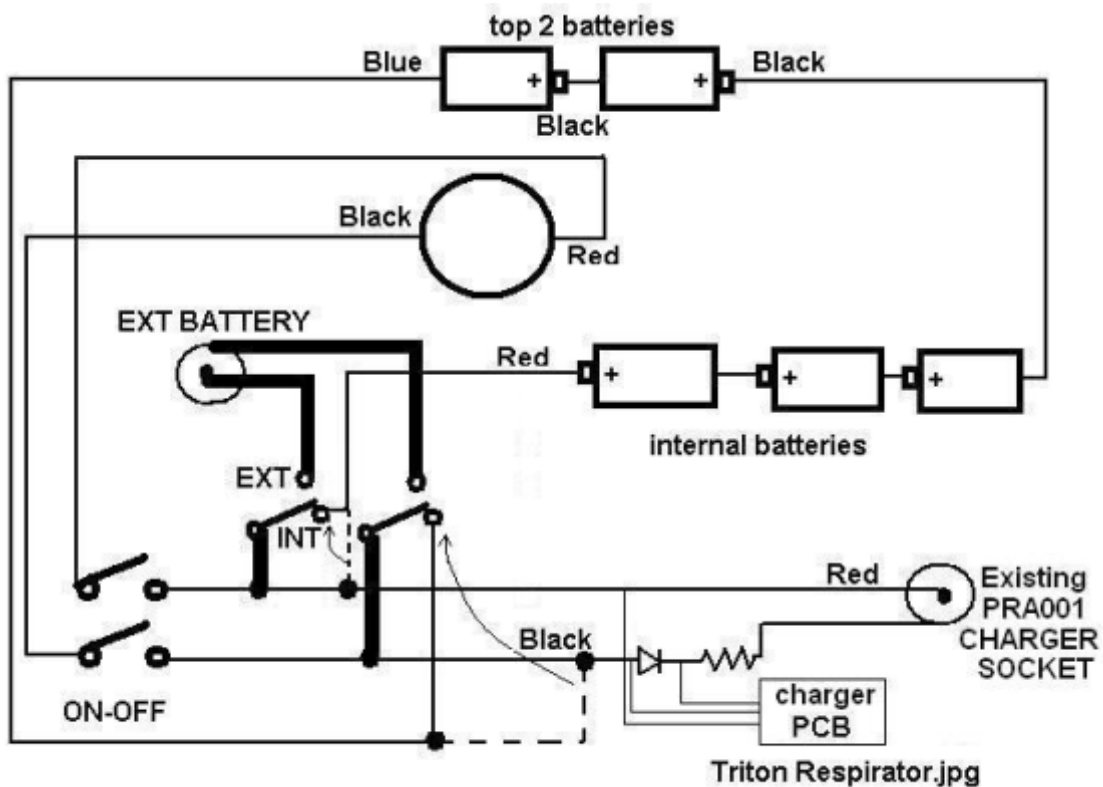
Having an electronics background and considering the simplicity of the respirator circuit, I decided to supplement the respirator by using an external 6V 4.5Ah Lead Acid Gel battery. These are very readily available, economical and carry a hefty punch of energy. Their mass of 0.75kg is comparable to that of the existing set of five NiCd cells ( $5 \times 0.135\text{kg} = 0.67\text{kg}$ ) but best of all, the Lead Acid Gel battery costs only \$19.90 compared to \$65 for the five NiCd cells (at \$13 each). It does, though, require an external battery carry pack be used to house the battery. The extra pack is no bother as its weight is not noticeable when located on the back right next to the respirator (see photo #1). I have used a bum bag strapped around the back of the waist and the battery cable plugs into a RCA gold socket that I fitted into the PRA. I have also incorporated a two pole switch so that I can initially use the external Lead-Acid Gel battery, which runs for about 6 hours, before I then switch to the pre-existing internal battery for a further 1~2 hours. While using the internal battery, the Lead Acid Gel battery can be recharging somewhere else through its own charger (do not use the PRA's).



The battery terminals are also terminated to an RCA gold plug via a 1 metre long cable. I found that the socket is well sealed and does not let any dust in or leak air out through the central conductor and it also has excellent and reliable concentric contacts. Photograph #2 shows the location of the switch and RCA socket.

Do not forget to keep in mind the Lead-Acid Gel battery polarity when wiring it to the RCA connector. I like to keep the central connector positive and the outer negative. The motor draws about 1200mA so the Lead-Acid Gel battery should theoretically last around 4 hours but in reality it runs for about 6 hours.

The circuit is straight forward. I have labelled the RCA connector as EXT BATTERY and the 2-pole switch is shown with its EXT/INT positions. One needs to cut the red and black wires and re-route the wiring to the 2-pole switch (as shown by arrows). Four extra wires need to be added to the remainder of the switch terminals and the new RCA connector. These are shown in bold lines on the diagram. This arrangement ensures that the PRA switch always operates as an ON/OFF switch irrespective of whether the internal or external battery is in use. The ON indicator light of the PRA operates normally. Note that the switch and connector should be fitted as shown in photograph #2 as this is the optimum location preventing fouling the internal filters, cells and wiring.



China has a population of a billion people. One billion. That means even if you're a one in a million kind of guy, there are still a thousand others exactly like you

---

Stuffed deer heads on walls are bad enough, but it's worse when you see them wearing dark glasses, having streamers around their necks and a hat on their antlers. Because then you know they were enjoying themselves at a party when they were shot

---

Two campers are hiking in the woods when one is bitten on the rear end by a rattlesnake. "I'll go into town for a doctor," the other says. He runs ten miles to a small town and finds the town's only doctor, who is delivering a baby. "I can't leave," the doctor says. "But here's what to do. Take a knife, cut a little X where the bite is, suck out the poison and spit it on the ground." The guy ruins back to his friend, who is in agony. "What did the doctor say?" the victim asks. "He says you're gonna die."

---

My wife and I took out life insurance policies on each other — so now it's just a waiting game

---

Mario Andretti has retired from race car driving. That's a good thing. He's getting old. He ran his entire last race with his left blinker on

---

Two Irish guys are fishing. The first guy reels in his line and sees that he's snagged an old bottle. As he's taking it off the hook, a genie pops out and promises to grant him one wish. "Turn the lake into beer," he says. The genie goes "Poof!" and the lake turns into beer. He says to the other guy, "So what do you think?" The other guy says, "You jerk. Now we've got to piss in the boat."

---

A Catholic teenager goes to confession, and after confessing to an affair with a girl is told by the priest that he can't be forgiven unless he reveals who the girl is. "I promised not to tell!" he says. "Was it Mary Patricia, the butcher's daughter?" the priest asks. "No, and I said I wouldn't tell." "Was it Mary Elizabeth, the printer's daughter?" "No, and I still won't tell!" "Was it Mary Francis, the baker's daughter?" "No," says the boy. "Well, son," says the priest, "I have no choice but to excommunicate you for six months." Outside, the boy's friends ask what happened. "Well," he says, "I got six months, but three good leads."

---

And from the Genius of Stephen Wright: All those who believe in psychokinesis raise my hand. -- The early bird gets the worm, but the second mouse gets the cheese. -- I almost had a psychic girlfriend but she left me before we met. -- OK, so what's the speed of dark? -- How do you tell when you're out of invisible ink? -- If everything seems to be going well, you have obviously overlooked something. -- Ambition is a poor excuse for not having enough sense to be lazy. -- Hard work pays off in the future. Laziness pays off now. -- Everyone has a photographic memory. Some just don't have film. - If at first you don't succeed, then skydiving definitely isn't for you. -- If at first you don't succeed, then skydiving definitely isn't for you. -- 99 percent of lawyers give the rest a bad name. -- Bills travel through the mail at twice the speed of checks -- Experience is something you don't get until just after you need it. -- The severity of the itch is proportional to the reach. - The hardness of the butter is proportional to the softness of the bread.



This is a page that you the turner can contribute to on an ongoing basis. The woodturning fraternity has an enormous databank of knowledge inside those heads. Unfortunately it does have a conduit to get this valuable info the wider woodturning brethren. So without any further ado, we present an area to drop those tips and tricks that every woodturner has in their repertoire.

---

\*\*Do you turn a lot of green or greenish timber and need a kiln? There are several options open to you but think about using an old dishwasher as a kiln. Start by cleaning out all the old pump and crap that you don't need and place a drop light with a 100-watt light bulb in the bottom of the box, running the cord through the hole where the pump was. Also, drill a 1/8" hole through the door for a kitchen thermometer, the kind with a dial and a probe. The new dryer is complete. The temperature inside the box at about 95°F or 36 off degrees Celsius with a 100-watt light bulb, and lower the wattage to 75 or 60 if it exceeds 100°F in the summer. A bowl that is finish-turned to 6-10mm thickness will stabilize to around 10% moisture content in about 3 days, depending on the species, and the original moisture content. Thicker wood or a full 'dryer' will require a longer time. Cracking and distortion is no more of a problem than with air-drying. For a slower drying rate, either fill the bowl with wet shavings, wrap the piece in a grocery bag, place a pan of water in the bottom of the box, or do all three. The objective is to raise the humidity inside the box and slow the evaporation rate from the wood surface. The slightly elevated temperature and low humidity in the box also makes it an excellent drying chamber for varnish and oil finishes.

---

\*\*Do you have a heap of different sized bushes for all of those different pen kits? A simple and cheap solution is to pop on down to your local chemist and ask them if they have any small clear plastic containers with a white lid. They are cheap as anything, you can write on the front of them and on the lids and if you want to, screw them to a piece of wood convenient to the lathe.

---

\*\*Most turners run their lathes too fast. If the shavings hitting your hand feel hot, the RPM is set too high and will only result in a poor cut and premature dulling of your tool edge.

---

\*\*Is your power switch for your lathe awkwardly placed and potentially dangerous? Consider making (or have made for you) a remote switch in a metal box with a dirty big magnet attached to it. That way you can have your power switch right next to you for quick access.

---

\*\*Spend some time at a \$2 store or some discount store – they are an excellent source of lights and lamps. Two things we never seem to have enough of as woodturners

---

\*\*If you are short of timber to turn, befriend your local arborist or tree feller and let them know you may be able to “move” some timber – you'll probably find them keen to offload some timber to you.

---

\*\*If you are the kind to buy glues in bulk, consider using old tomato and barbecue sauce containers as dispensers, the type with a twist top – don't put too much in them and they seal well, have a good nozzle for directivity and if you leave it open you won't lose too much glue. They work well for the Shellawax/Glow range as well and the nozzle doesn't get Gunky like the original dispensers do...

One of the trickier aspects of woodturning is keeping your tools sharp. Everyone knows that woodturning requires sharp tools but depending on the wood used you can blunt your tools very quickly. Now if you happen to be at your woodturning club there is normally a plethora of people who can, freehand, assist you in sharpening your tools. Fast forward two weeks and you are in your shed doing your best to sharpen that tricky fingernail gouge and wondering just how you will go...

The first couple of times I used my grinder to sharpen some tools it was, to say the least, a bit hit and miss. I had a really nice deep shouldered gouge that I turned into a point that was for all intents, useless...I am sure I am not the first to do so but I know that there are many woodturners happily turning lovely ribbons of timber using razor sharp tools. So how are they doing it? Have they all just gleaned the wisdom to do so from their experienced club members? Some have done exactly that...some are just naturally skilful and intuitive and just know what to do...then there's the rest of us...floating somewhere in between.

So what's the solution? Well the answers simpler than you might think...the best way for a beginner (or a long time) turner to put on a repeatable edge on a chisel is to use a sharpening jig of some sort.

There are many fine commercially available sharpening jigs available on the market, running from a few dollars to more money than sense mega contraptions...and I would not begrudge a single turner buying any of them. Anything that makes sharpening easier has got to be a good thing...

Now, as you may be aware from previous stories, Scottish blood flows through my veins and as a result, if I can save some money I pretty much will make it myself rather than buy it. So what I am proposing is a universal sharpening jig that I think you can make. Now making things is not everyone's cup of tea, but I do believe that most woodturners are a resourceful lot. I don't think it's not too much of a stretch to think that if you have access to a welder (or a mate who owns one) that you are capable of making this project.

What's involved I hear you ask? Not a great deal. Literally \$30 worth of steel and some jigs and brackets worth around \$40 will set you up for a lifetime of your sharpening requirements.

The setup consists of four pieces to the setup: the fixed bracket that is affixed to the workbench/grinder setup, the sliding tool rest that is used for gouges and skew chisels, a holder for the gouges and a fixed angle bracket to sharpen scrapers.

The fixed bracket consists of square tubular steel attached to 2 right angle brackets with a screw and nut welded to the side. The size is not too critical but the principle here is that the tubular fixed bracket should be a size above whatever tube you use for the other two tool rests e.g. if you are using 25mm steel tube with an outside of 25mm X 25mm for the tool rests then you need to use a steel tube with an inside of 25mm X 25mm. Now it should be a snug fit, yet slide easily one tube into the other. The tubing I chose was 2mm wall thickness and that seemed to be amply thick for the job at hand. I used an arc welder to weld the steel bits and I am sure that you could use any welder available to do the task at hand.

Below is a picture of the fixed bracket:



## TREND TIMBERS PTY LTD

SPECIALISTS IN FINE WOODS  
Established 1969A third generation timber family

WOODWORK

OVER 100 Species of Timber for Wood Turning, Carving, Furniture, Joinery, Box Making, Boat Building & Cabinet Making  
Shellawax  
Rustins Finishes  
Welbond Glue  
Bote Cote Epoxy  
Marine Plywood  
Organoil Finishes



Teknatool Lathes, Chucks & Accessories  
Range of Wood Turning Books  
Project Parts  
Wood Turning Blanks  
Power Sanding Kits  
Cloth Back Sandpaper  
Grinders  
Slip Stones  
Wood Turning Jackets

WOODWORK



### NOVA 1624-44 Wood Lathe

Portable & Compact, this new Nova 1624 has the ability to last a turner a lifetime!! With a swivel head, reversible motor and a better speed range, 8 speeds—178rpm to 3000rpm, this lathe is perfect for any level of turner. The Nova 1624 has more power, lower speeds and the capacity to handle bowls up to 24". This is the only lathe you will ever need to own. Standard Equipment: Cast Iron and box section metal stand, 1.5 horse power motor, 2mt spur drive, 2mt live centre & a 80mm face plate.



## TREND TIMBERS PTY LTD

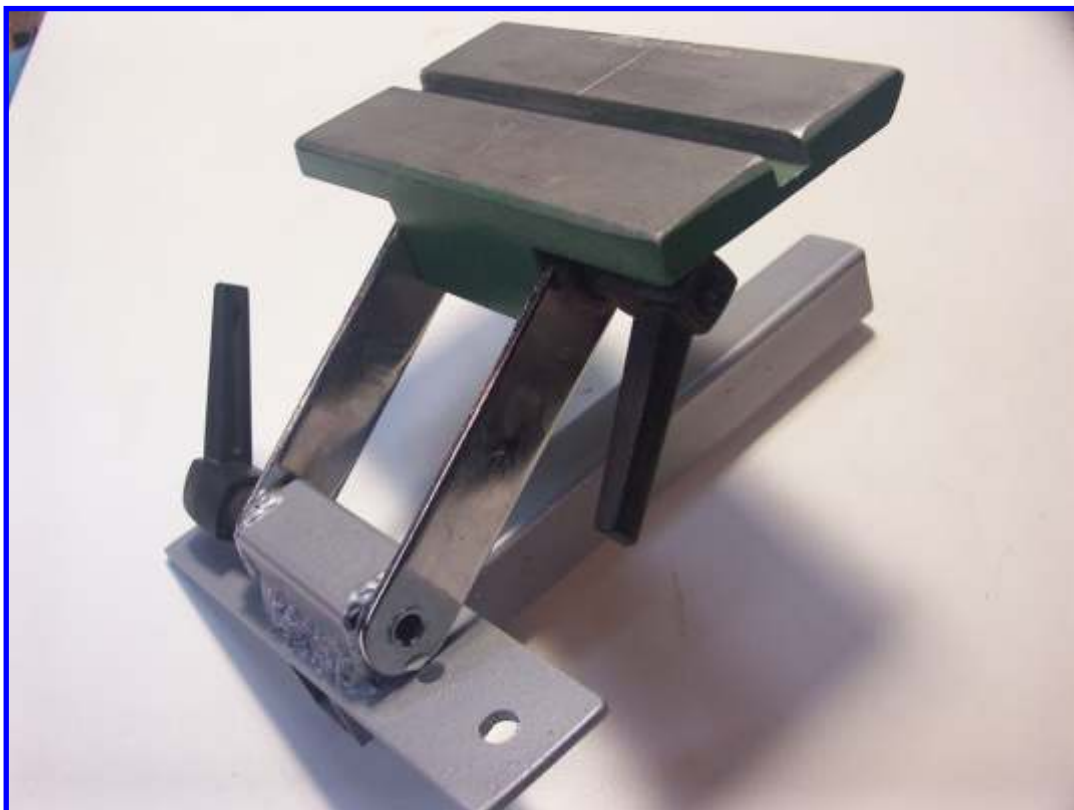
Lot 1 Cunneen St.  
Mulgrave/McGraths Hill NSW 2756  
TELEPHONE: 02 4577 5277 FAX: 02 4577 6846  
Email: sales@trendtimbers.com.au

[www.trendtimbers.com.au](http://www.trendtimbers.com.au)

Opening Hours  
ALL WELCOME!!  
Mon-Fri 8am-4pm  
Sat 8am-11.30pm  
Closed  
Public Holiday &  
Long Weekends

As can be seen it consists of about 300mm of square tube with the two right angle brackets welded to it. The brackets can be bought from any hardware store and are only a few bucks each. Judicious use of a square and clamps to ensure its all kept in square when you weld it is essential. As can be seen the adjustment screw is nothing more than a hole drilled in the tube with a nut welded to it. Into this is a piece of all thread welded to a wing nut. Simple so far....once this is welded and painted with your favourite hue of paint, you mount this bracket so it lines up with the centre line of your grinder wheel. This is a bit of mucking around but worth getting it right but spend the time.

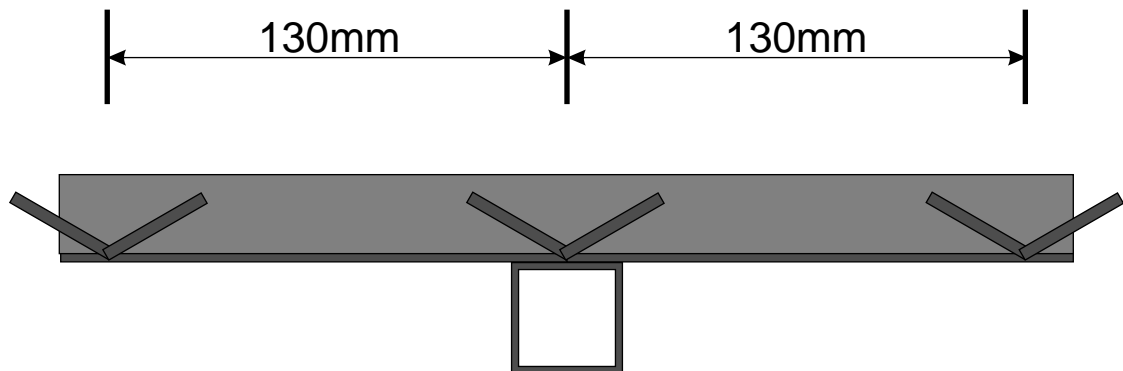
Next thing to make is the adjustable angle tool rest. I cheated and modified an existing one I already had available. I made a bracket to allow it to be used with the fixed (but adjustable?) bracket which gives it more flexibility than the previous fixed mounting.



The third part of the jig is a sliding jig that is used to sharpen gouges and skew chisels. I have found that my attempts to freehand sharpen my skew chisel using the fixed angle platform has never been that successful, but with this jig, I have repeatable sharpness that I require.

The jig consists of a long metal tube, sized to fit inside the fixed jig that is bolted to the workbench below my grinder. Mine is about 700mm long so it can accommodate the biggest skew in my chisel arsenal. To this is welded plate that has three “V” shaped brackets attached to it. One is welded to the centreline of the tube on top of the plate and the other two are attached to each end of the plate. These are located so that the skew chisel can be place at either end, presented to the grinding wheel for the correct angle and repeatable sharpness achieved. The two end brackets are placed 130mm from the centreline of the centre V bracket:





Its use in sharpening simple gouges is easy. Place the gouges handle in the ventral V shaped brackets and adjust it by sliding the jig in or out whilst contacting the grinder wheel. When the bevel is at the correct angle on the grinding wheel, lock off the wing nut and proceed to turn on your grinder and sharpen your chisel.

Sharpening skew chisels is equally simple. Place the skew on either the left or right side V shaped brackets and adjust it by sliding the jig in or out whilst contacting the grinder wheel. When the bevel is at the correct angle on the grinding wheel, lock off the wing nut and proceed to turn on your grinder and sharpen your skew chisel. If you placed it on the left side first, flip over the skew and place it in the right hand V and sharpen it, the angle being correct and not needed to be changed.



The adjustable angle tool rest is probably the one you have had the most exposure to – it consists of a platform (tool rest) and several adjustable angles to give the desired angle. It's fairly simple to use – adjust the angle to match the bevel angle of the tool you are sharpening e.g a round nose scraper and away you go...simple...

I have left the challenging sharpening chore to the end. Things like fingernail gouges and some of the trickier detail gouges have some pretty whack job angles, which would be incredibly tough to freehand replicate.

So I didn't bother to try and instead modified a microphone stand to act like a fancy store bought one. I did some research and worked out the ideal length (for me at least with my setup) from the centre of the adjustable angle to the tip of the point where it contacts the V was 250mm.





## Ernie Newman's Woodturners Quiz - The Questions

1. Which is the only country named after a tree? Clues; it is the fifth largest country in the world by area and produces an edible nut.
2. Which world famous English born, Australian turner has the same initials as an English luxury car?
3. It is dangerous to sniff a solvent but is there any risk in just being able to smell a solvent?
4. Faceplate work can be very difficult to cut without getting tear out on end grain. This can necessitate a lot of sanding and even then sometime the damage remains. Name two measures to reduce grain tear out on faceplate work.....
5. There were many woodturners in medieval England hence many people acquired the surname Turner. The Welsh version is Turnaur, the German version is Drexler and the French version is Turnour. Tokarz is also a surname meaning turner. Is it Polish or Spanish?

1. Brazil is the only country named after a tree.
2. Richard Raffan has the same initials as Rolls Royce?
3. If you can smell the solvent in glue it is damaging your healthy – use such glues outside the workshop
4. Grain tear out on faceplate work can be minimised by:  
A/ cutting as opposed to scraping  
B/ using a gouge with a longer bevel, e.g, a gouge ground at 30 degrees will cut more cleanly than a gouge ground at 40 degrees though this isn't always possible inside a bowl if the bevel is to rub  
C/ honing before making final cuts  
D/ making light final cuts
5. Tokarz is a Polish surname meaning turner.

**For Sale - For Sale - For Sale - For Sale - For Sale -**

Hello

Could you please put the following for sale in the Newsletter. Maybe someone can find a use for these.

I used to be a member of the Guild (Hornsby) but did not get into woodturning very much. I have the following for sale hardly been used, I contacted Adrian at Trend Timbers who was kind enough to give me an idea of the prices.

Teknatool Nova TL 1500 woodturning lathe with accessories including Nova scroll chuck, 80mm faceplate, 150mm index faceplate, screw chuck.

Henry Turner woodturning tools: HS 22 1 inch Skew chisel, Gouges HS 6 3/8 inch spindle, HS 7 1/2 inch spindle, HS 42 1 1/4 inch standard roughing, HS 55 1/2 inch long & strong bowl, WTC 2. HS 33 Parting tool (diamond), HS 27 1 inch scraper. All in homemade box.

25 woodturning magazines in plastic sleeves in binders and instruction book for lathe and chucks. Plus a small box of timber blanks. Sell the lot \$2000 or best offer

Also a Triton Mark 3 Workcentre, used twice, on stand and wheels as new. With manuals. Cost \$400, sell for \$250.

Thank you very much for your time,

Tony Pitcher - Contact 9639-6639.

This is dedicated to “Far Ken”.

I would expect most of you know that I am the Guild Membership Secretary. Since Incorporation, the majority of my duties are as a “backup” for the Treasurer or Membership Secretary of each region who handle membership. They have the “legal” responsibility for maintaining a complete list for their group. But one of my great pleasures is to process the new member applications and send the “Welcome Letter” to those who are joining the Guild.

On the other hand, too often I have the melancholy duty of removing a member from our list. A fair number just quietly “drop off the perch” and fail to renew. But a few members are of such significance that their passing is noted, and I am informed.

I have been thinking about this recently, not only because we have lost a few members ourselves over the last few months, but also because a friend of mine died just a little while ago. He was not a Woodturner: we met through work, and oddly for me, we kept in touch after we both retired. I admired his knowledge, his humour and his generosity... and I will miss him greatly. I count it an honour to have called him friend.

In the office, he sat on one end of a row of desks, and I sat at the other end. As a result, together we were known as the “Book Kens”. Further, as I was Team Leader at the time, I sat closer to the Manager’s office. So I was “Near Ken”, and he was “Far Ken”... and when we had a particularly difficult day, his desk was known as “Far Ken Hell”.

That was the type of guy he was: clever, quick, quirky, and with a sense of humour that was often startling, remarkably kind and very enjoyable. But I feel that the real shame in his death is the loss of his knowledge and ability. He was a real “computer expert”: someone who could literally take them apart and put them together, as well as make the software “sit up and beg” (i.e. make it do what it is supposed to do in the first place...). He spent the last six years of his life building computers, at cost, for his rural community, and training young people in what these “simple” machines can do.

All that is now gone. And the real tragedy is that his knowledge, experience, skill and generosity is gone with him. And that happens every time we lose a friend... or a member. “All that we have left undone...”

So, in memory of “Far Ken”, I would like to suggest that everyone seriously consider sharing their knowledge and experience as much as they can. That is, after all, the reason we have a Guild: to make sure our ideas, techniques and abilities are passed on to others, and hopefully, improved on, and then passed on again. If you don’t think you can stand up in front of a group and demonstrate something, then write it down, and submit it to By Hand and Eye for publication. Or at the very least, just tell someone. Let’s start a “Tips and Techniques” section in our magazine that everyone can contribute to, or just submit your ideas to Scott Rollo at [guildnewsletter@exemail.com.au](mailto:guildnewsletter@exemail.com.au) so that others can benefit from your experience. This is what we come together to do, so let’s do it. In memory of those who taught us.

And it is only then that our ideas, skills and knowledge will never die.

CAMI (U.S. Std) (See Note 1)	FEPA (P-Scale) (See Note 2)	Finishing Scale	Average Grit Particle Size	
			Microns	Inches
1200				
1000	P 2000		9.6	0.00042
800	P 1500		12.3	0.00051
	P 1200	A16	15.8	0.00060
600			16.0	0.00062
	P 1000		18.3	0.00071
500			19.7	0.00077
	P 800	A25	21.8	0.00085
400		A30	23.6	0.00092
	P 600	A35	25.8	0.00100
360			28.8	0.00112
	P 500		30.2	0.00018
	P 400	A45	35.0	0.00137
320			36.0	0.00140
	P 360		40.5	0.00158
280			44.0	0.00172
	P 320	A60	46.2	0.00180
	P 280		52.5	0.00204
240		A65	53.5	0.00209
	P 240	A75	58.6	0.00228
	P 220	A90	65.0	0.00254
220			66.0	0.00257
180	P 180	A110	78.0	0.00304
150		A130	93.0	0.00363
	P 150		97.0	0.00378
120			116.0	0.00452
	P 120	A160	127.0	0.00495
100			141.0	0.00550
	P 100	A200	156.0	0.00608
80			192.0	0.00749
	P 80		197.0	0.00768
	P 60		260.0	0.01014
60			268.0	0.01045
	P 50		326.0	0.01271
50			351.0	0.01369
	P 40		412.0	0.01601
40			428.0	0.01669
	P 36		524.0	0.02044
36			535.0	0.02087
	P 30		622.0	0.02426
30			638.0	0.02488
24			715.0	0.02789
	P 24		740.0	0.02886

1 CAMI = Coated Abrasives Manufacturers Institute (North America) (Allows a wide tolerance range of particle sizes within the definition of a particular grit)

2 FEPA = Federation of European Producers Association (More consistent sized grit particles than CAMI)



Dear friends

I have been invited to teach woodturning in Samoa by a master carver, Penehuro Papalii. Because of the recent tsunami and earthquake that had such a major impact in Samoa, I am very keen to assist. I am hoping for your support to make this trip a success. Penehuro runs the Beautiful Expressions of Nature Fine Arts Academy in Apia, the capital of Samoa. We believe his students can make a commercial success of turning small items for sale to tourists through his gallery and at the daily market in the city.

The main focus of the school is carving but, although it has two lathes, Penehuro has limited knowledge of turning so I can make a difference. My aim would be to teach commercial techniques so that Pehehuro's students [young men from 14-20] could earn a living through woodturning. I also hope to train Penehuro and one, or more, of his assistants to carry on teaching after I return to Australia.

I plan to go to Samoa in February and will pay my fare. I ask you to consider contributing because I need to acquire lathes, chucks and tools. I have already secured a brand new Jet mini lathe [\$420] and two chucks [\$140 each] but I hope to get three more lathes and chucks and enough tools [\$200 per set] for each lathe. I plan to ship whatever resources I have collected in late November. Can you help?

I met Penehuro in early October at Collaboration 09, a workshop for internationally renowned wood artists. He made a considerable impact and the participants donated tools and cash for the Academy. The Swiss government made a major donation of machinery so the Academy is well equipped in some areas but lacking in others, particularly woodturning.....

I hope to make a significant difference to the Academy and to the lives of its students. My resume and some published reviews are appended below. I realise that you support other causes and don't want to place you under any pressure. If you can help that would be great, but, if not, then I understand.

All the best Ernie

## **RESUME - ERNIE NEWMAN**

95-2009 Over 100 demonstrations in 7 countries.

2010 To be lead demonstrator at Turn-Fest symposium in Australia.

2003-9 Teacher of the Extension Course – a 1500 hour long woodturning course [drawing, theory and practical projects].

2006 Lead demonstrator at Southern States symposium in Georgia, USA.

2005 Exhibited in Innovations: Perspectives in Turning, Connecticut.

2005 Demonstrator at Blue Mountains International symposium in Australia.

2004 Lead demonstrator at Turn-Fest symposium in Australia.

2003 Lead demonstrator at Georgia Association of Woodturners symposium.

2001-3 Exhibited in Challenge VI, run by the Wood Turning Center, PA, USA.

2001 Lead demonstrator at A Texas Turn Or Two symposium and at South Pacific Symposium in New Zealand.

2001-3 In Challenge VI exhibition run by the Wood Turning Center, PA, USA.

2000 Demonstrator at symposiums in Puy St Martin, France and Newcastle, Australia.

1999 Major presenter at the AAW annual symposium in Tacoma, Washington, USA.

1998 Invited participant at Emma Lake, a wood art conference in Saskatchewan, Canada.

1997 Demonstrator at the World Turning Conference in Pennsylvania, USA.

1993-99 Teacher of the Woodturning Trade Certificate course at Lidcombe College of Technical And Further Education in Sydney, Australia. The course provided 736 hours of drawing, theory and practical turning for woodturning apprentices.

1991-2009 over 70 published articles in Australian Woodworker, American Woodturner, Woodwork, Turning Points and New Zealand Woodturner.

1992-2009 Work featured in books - Challenge VI Roots, Woodturning Design [Darlow], Turned Chessmen [Darlow], and periodicals - Woodturner [UK], Woodwork, American Woodturner, Turning Points [USA], Australian Wood Review, Australian Woodworker, New Zealand Woodturner,

2000-2005 Coordinator of Australian Collaboration – an international wood art conference.

1988 Woodturning Trade Certificate (distinction) - Sydney College of Technical and Further Education. 1974 Bachelor of Arts and 1977 Diploma of Education - Sydney University.

**Address** 87 St Johns Road Blaxland N.S.W. 2774 Australia - Telephone 61 2 47 39 1248 - E-mail [ernienewman@hotmail.com](mailto:ernienewman@hotmail.com) - Website <http://ernienewman.cjb.net>

## Referees

Albert LeCoff - Executive Director, Wood Turning Center, 501 Vine St, Philadelphia, PA 19106, U.S.A. Tel 215 923 8000, Fax 215 923 4403, E-mail [turnon@woodturningcenter.org](mailto:turnon@woodturningcenter.org)

Terry Martin - Author *Wood Dreaming*, Editor *Turning Points* – 3 Standring St, Toowong, Queensland 4065, Australia, Tel 61 73 369 8907, E-mail [tmartin@ecn.net.au](mailto:tmartin@ecn.net.au)

## PUBLISHED REVIEWS

"The crowd watching [Ernie] was entranced, and it included not only the hobbyists. Glitterati of the wood-turning scene such as David Ellsworth, Al Stirt and Alan Lacer and others were just as fascinated. Partly it was due to Ernie's good line in repartee, but it was mainly because Ernie is a phenomenal turner. No sooner did he apply a tool to the wood than faces lit up all around, and people turned to each other nodding and smiling."

Terry Martin, author of *Wood Dreaming*, in *Turning Points* Winter 1997.

"At lunch on the second day we had a splendid demonstration on the lathe by Ernie Newman of Australia. In about an hour Ernie covered 3,000 years of woodturning objects—from Etruscan tops to television legs of the 60s. Educational and entertaining, Ernie held our attention with humour and deft turning skills."

Alan Lacer, former AAW president, in *American Woodturner* December 1997.

"Ernie Newman is a wizard with the chisel and the speed at which he shaped his items was awesome and left those watching gasping with admiration. What made him such a delight to watch was his lively explanations and repartee that went with the turning."

*New Zealand Woodturner* December 2001

"If Ernie Newman ever decides to give up woodturning he can easily make a living as a stand-up comic. His demo titled 'Magic, Science and Woodturning' was a treat. Ernie turned a real magic wand [yes it actually worked], gravity defying spindles, a carrot and an ear of corn [you had to be there].

Larry Mart *American Woodturner* Winter 2001



# ANAGOTE PTY LTD

TURNING TIMBERS IN STOCK CURRENTLY  
INCLUDE RED CEDAR, CAMPHOR LAUREL,  
AMERICAN CHERRY, QUEENSLAND MAPLE,  
AMERICAN ASH, KAURI, PADOUK, AMERICAN  
WALNUT AND ZEBRANO

**144 - 146 Renwick St.,  
Marrickville, N.S.W. 2204  
Phone 9558-8444 Fax 9558 8044**

Here is a short list of Woodturning sites that will get us started with links to some very useful sites.

If you have any links you would like to contribute send them to [guildnewsletter@exetel.com.au](mailto:guildnewsletter@exetel.com.au)

<http://www.sydneywoodturners.com.au/> our homepage

<http://www.wood-eze.com.au/> Leigh Ferguson's site – sells at Southern maxi days & his own shop

<http://www.trendtimbers.com.au/> large variety of timber, tools, lathes and finishes

<http://anagote.com/> great site for wood

<http://www.carbatec.com.au> one stop shop for most woodworking varieties

<https://www.machineryhouse.com.au/> Hare and Forbes machinery

<http://www.addictivepenkits.com.au/> amazing pen kits with an impressive site

<http://aroundthewoods.com/> excellent site for beginner and advanced turner alike

<http://www.woodturningonline.com/> incredible site with literally hundreds of articles

<http://www.woodturner.org/> The American association of Woodtumers

<http://mgorrow.tripod.com/links2.html> mega link to over 500 sites!

<http://www.woodturners.co.uk/> link to most UK based clubs & links

<http://www.laymar-crafts.co.uk/> Huge site with literally hundreds of useful links

<http://www.woodturnersresource.com/> a great resource for the woodturner

<http://www.hiltonhandcraft.com/> a useful site for turners

[http://ornamentalturning.net/articles/more\\_woodturning\\_magazine.html](http://ornamentalturning.net/articles/more_woodturning_magazine.html) one stop shop for ornamental turners

<http://www.woodturningdesign.com/> Woodturning magazine site.

<http://home.vicnet.net.au/~pwguild/> Mornington Peninsula site in Victoria

<http://www.woodturningvideosplus.com/index.html> very good site by a pro turner

<http://www.bigtreeturnings.com/> Professional turner site from America with some useful stuff

<http://www.rockler.com> Supplier of everything you'll ever need (in US dollars)

<http://www.penturners.org/> American site for the pen turner fraternity – most comprehensive

<http://www.woodworkforums.com> an enormous forum for everything wood and more

<http://www.woodturns.com/resources/woodturning.htm> a useful resource for the turner

## GUILD MEETINGS

Guides Hall, Waldron Rd Chester Hill			
Month	Committee	Bi-Monthly	Time & Cost
January		16 Southern	9 a.m \$6
February	1	—	—
March	29	21 Western	9 a.m \$6
May	31	30 Macarthur	9:45 a.m \$5
July	26	17 Southern	9 a.m \$6
September	27	19 Nor. Beaches	9 a.m \$6
November AGM	29	27 Stn. Highland	10 a.m \$6
All guild meetings 18:30 till finish President Bill Black 9541 2405			

## HORNSBY DISTRICT WOODTURNERS INC.

1 Shoplands Rd. Annangrove	
<u>Saturday</u>	
Jan none	
Feb 13	
Mar 13	
Apr 10	
May 8	
Jun 12	
Jul 10	
Aug 14	
Sep 11	
Oct 9	
Nov 13	
Dec Xmas Tea TBA	
Saturdays 1100 - 1630 President Lindsay Skinner 9679 1055	

## BANKSTOWN CITY WOODTURNERS INC.

Guides Hall, Waldron Rd Chester Hill	
<u>Saturday</u>	<u>Tuesday</u>
Jan 2	Jan 12
Feb 6	Feb 9
Mar 6	Mar 9
Apr 3	Apr 13
May 1	May 11
Jun 5	Jun 8
Jul 3	Jul 13
Aug 7	Aug 10
Sep 4	Sep 14
Oct 2	Oct 12
Nov 6	Nov 9
Dec 4	Dec 14
Saturdays 0800 - 1600 Tuesdays 1800 - 2100 President Kevin Santwyck 9644 8366	

## MACARTHUR WOODTURNERS INC.

Robert Townson High School Shuttleworth Ave Raby(maxi only)	
<u>Sunday</u>	<u>Wednesday</u>
Jan 31	Jan none
Feb 28	Feb 10
Mar 28	Mar 10
Apr none	Apr 14
May 1 & 30	May 12
Jun 27	Jun 9
Jul 25	Jul 14
Aug 29	Aug 11
Sep 26	Sep 8
Oct 31	Oct 13
Nov 28	Nov 10
Dec none	Dec 5
Sunday Maxi 0945 - 1500 cost \$5 Wednesday Mini 1100 - 1430 Mini meetings at 48 Engesta Ave Sth Camden President Paul Kruss 9823 8340	

## EASTERN REGION WOODTURNERS INC.

Unit 16, 14 Anderson St. Banksmeadow	
<u>Sunday</u>	
Jan 10	
Feb 7	
Mar 7	
Apr 11	
May 2	
Jun 6	
Jul 4	
Aug 1	
Sep 5	
Oct 10	
Nov 7	
Dec 5	
Sundays 1000 - 1530 President Graham Tilly 9660 3071	



## MENAI REGION WOODTURNERS INC.

Menai High School Gerald Rd. Illawong
<b>Tuesday</b>
Jan none
Feb 9
Mar 9
Apr 20
May 11
Jun 15
Jul 20
Aug 17
Sep 14
Oct 12
Nov 16
Dec 7
Tuesdays 1800 - 2100 President Bruce Houldin 9542 1087

## NORTHERN BEACHES WOODTURNERS INC.

Narrabeen RSL Club Nareen Pde North Narrabeen		
<b>Sunday</b>	<b>Tuesday Workshop</b>	<b>Friday Workshop</b>
Jan none	Jan none	29
Feb 21	2,9,16,23	5,12,19,26
Mar 21	2,9,16,23	5,12,19,26
Apr 18	6,13,20,27	9,16,23,30
May 16	4,11,18,25	7,14,21,28
Jun 27	1,8,15,22,29	2,9,16,23,30
Jul 18	6,13,20,27	2,9,16,23,30
Aug 15	3,10,17,24	6,13,20,27
Sep 19	7,14,21,28	3,10,17,24
Oct 17	5,12,19,26	1,8,15,22,29
Nov 21	2,9,16,23,30	5,12,19,26
Dec 12	7,14,21	3,10,17
Sundays 0900 - 1400 Workshops 0900 - 1200 President Meg Webster 9450 1032		

## SOUTHERN HIGHLANDS WOODIES INC.

Harbison Care Villiage Moss Vale Rd. Burradoo	
<b>Saturday</b>	<b>Friday</b>
Jan 23	8,15,22,29
Feb 27	5,12,19,26
Mar 27	5,12,19,26
Apr 24	2,16,23,30
May 22	7,14,21,28
Jun 26	4,11,18,25
Jul 24	9,16,23,30
Aug 28	6,13,20,27
Sep 25	3,10,17,24
Oct 23	8,15,22,29
Nov 27	5,12,19,26
Dec 11	3,10,17
Saturdays 1000 - 1630 Wednesday/Friday 0930 - 1230 Pls call for Wed/Fri to confirm meeting President John Powell 4871 2714	

## SOUTHERN REGION WOODTURNERS INC.

"Cubbyhouse" Como Road Oyster Bay (opp. Scylla Rd.)							
	Wednes. Mini Day	Wednes. Mini Nite	Workshop Meeting	Saturday Maxi Days	Hours Mini Day	Tue/Wed Toy/Friend ship Day	Special Events
Jan	6	13	11	16 BM	21	27	Bi-Monthly @ Southern
Feb	3	10	15	20	25	23-24	
Mar	3	10	15	20	25	23-24	
Apr	7	14	12	17	22	27-28	
May	5	12	10	15	20	25-26	Oyster Bay Skool Fete
Jun	2	9	15	26**	24	22-23	18,19,20 WWWS
Jul	7	14	12	17 BM	22	27-28	Bi-Monthly @ Southern
Aug	4	11	16	21AGM	26	24-25	Annual General Meeting
Sep	1	8	13	18	23	28-29	
Oct	6	13	11	16	21	26-27	Craft Show
Nov	3	10	15	20	25	23-24	Xmas party Oct. 28th
Dec	1	8	13	18++	-	-	Xmas party @ Cubby Hse
Maxi days Saturday 0900 - 1500 cost \$6 Mini Days both 0900 - 1500 cost \$3 Mini nite 1800 - 2100 cost \$3 Toy/Friendship days 0900 - 1400 no cost President Frank Williams 9587 1396							

## WESTERN SYDNEY WOODTURNERS INC.

Twin Gums retreat, Cnr Northcott Road & Dianne Drive Lalor Park				
Sunday	Tuesday	Wednesday	Thursday	Friday
Jan 17	12,19,26	6,13,20,27	7,14,21,28	1,8,15,22,29
Feb 21	2,9,16,23	3,10,17,24	4,11,18,25	5,12,19,26
Mar 21	2,9,16,23,30	3,10,17,24,31	4,11,18,25	5,12,19,26
Apr 18	6,13,20,27	7,14,21,28	1,8,15,22,29	2,9,16,23,30
May 16	4,11,18,25	5,12,19,26	6,13,20,27	7,14,21,28
Jun 20	1,8,15,22,29	2,9,16,23,30	3,10,17,24	4,11,18,25
Jul 18	6,13,20,27	7,14,21,28	1,8,15,22,29	2,9,16,23,30
Aug 15	3,10,17,24,31	4,11,18,25	5,12,19,26	6,13,20,27
Sep 19	7,14,21,28	1,8,15,22,29	2,9,16,23,30	3,10,17,24
Oct 17	5,12,19,26	6,13,20,27	7,14,21,28	1,8,15,22,29
Nov 21	2,9,16,23,30	3,10,17,24	4,11,18,25	5,12,19,26
Dec 19	7,14,21	1,8,15,22,29	2,9,16,23,30	3,10,17,24

**Tuesdays, Wednesdays & Thursdays: 0930 - 1530**  
**Fridays: 1900 - 2100**  
**President Eddie Catford 9837 3311**  
**Ladies days are held regularly organised by Anna Dawes 9638 6995**

### IN THE SHOP

**WOODTURNING JACKETS \$40 POST \$5**  
 Bottle Green, short sleeved with Velcro neck closure. Keep the shavings where they belong

**GUILD CAPS discounted to \$5! POST \$2.50**  
 Wear backwards - become a turner with attitude!

**CLOTH BADGES AND ENAMEL BADGES \$5.00**  
 Order from: Treasurer, Fred Warr, 4 Wittenoon Place YARRAWARRAH, 2223

Bankstown have now had their name change accepted and approved by Fair Trading, and we are now officially known as Bankstown City Woodturners Guild Inc. This was done after approaches had been made to the Bankstown City Council back in May this year, and our intentions were reported in By Hand & Eye of that month.

The Bankstown City Council was only too pleased to let us use their name, and one of the reasons for doing this was to enable us to identify more closely with the local community in which we operate.

Our October and November meetings were well supported as usual, with 28 and 32 members present respectively, and among them 3 new members.

A "redistribution" of Jacaranda timber took place, and many of those present were very happy to add a bit of this wonderful turning timber to their collections. At almost every Saturday meeting there is some sort of redistribution of timber, or if not timber, much information is exchanged. One of the good things about our group, and indeed, many of the Guild affiliate groups, is the freedom of exchange of timber, hints, tips, and other information that takes place.

Bankstown members attended the Villawood Spring Festival on October 26, and in spite of some unpleasantly strong winds, we had a good day, and raised some more money for our chosen charity. We shared our stand with the Sydney Woodcarvers (2 of them), and saw some interesting work, most of which can not be done on a lathe, naturally.

We were paid a visit at our November Saturday meeting by one of the Guild's long standing and much respected Life Members, Simon Priem, who has recently moved into the area, and it was great to see Simon again after such a long break.

As can be seen from the 9 accompanying photographs, (and others in previous newsletters) our members are a diverse bunch with a very broad spectrum of skills and interests in the craft of wood turning







Eastern Region was started in 1985-1986 by **Jim Dorbis** while a student of woodturning at a College of Technical and Further Education. Things were hard in the beginning but at the same time exciting

Eastern Region is the smallest of all the Sydney Woodturners Guild Regions but it is well supported. Most of the members are working and often lack time to devote to their hobby but are emphatic that the eastern region will survive

In the early days of the Region, meetings were held at Jim Dorbis's premises, But recently meetings are being held in various other members workshops which is a good way of seeing other peoples tools and equipment and approach to workshop safety. The members find this approach very practical

Eastern Region is a miniature United Nations with members originating from Sweden, Italy, Egypt, Israel and Malta. Some members even come from Sydney

Eastern Region usually meets on the first Sunday of each month although this sometimes changes to accomodate long week ends and other holiday periods. Details of meeting loacations and dates may be got from;

- Graham Tilly (Convenor) 9660 3071
- Stephen Gahan (Guild Representative) 98173083

As we are a Region of the Sydney Woodtumers Guild, all Guild members may attend our meetings and local or overseas visitors are especially welcome. We have found that it is easier to learn in a small group then in a large one. Our fees are \$2.00 a meeting.

If you are looking for a new hobby please do come and join us, you'll never regret it.



# TREND TIMBERS PTY LTD

SPECIALISTS IN FINE WOODS  
Established 1969A third generation timber family

**OVER 100 Species of Timber for**  
Wood Turning, Carving, Furniture,  
Joinery, Box Making, Boat Building &  
Cabinet Making  
Shellawax  
Rustins Finishes  
Welbond Glue  
Bote Cote Epoxy  
Marine Plywood  
Organoil Finishes



Teknatool Lathes, Chucks & Accessories  
Range of Wood Turning Books  
Project Parts  
Wood Turning Blanks  
Power Sanding Kits  
Cloth Back Sandpaper  
Grinders  
Slip Stones  
Wood Turning Jackets



**NOVA 1624-44 Wood Lathe**  
Portable & Compact, this new Nova 1624 has the ability to last a turner a lifetime!! With a swivel head, reversible motor and a better speed range, 8 speeds—178rpm to 3000rpm, this lathe is perfect for any level of turner. The Nova 1624 has more power, lower speeds and the capacity to handle bowls up to 24". This is the only lathe you will ever need to own. Standard Equipment: Cast iron and box section metal stand, 1.5 horse power motor, 2mt spur drive, 2mt live centre & a 80mm face plate.

**COMING SOON!**





**From The  
TREND TEAM**

## TREND TIMBERS PTY LTD

Lot 1 Cunneen St.  
Mulgrave/McGraths Hill NSW 2756  
TELEPHONE: 02 4577 5277 FAX: 02 4577 6846  
Email: sales@trendtimbers.com.au  
[www.trendtimbers.com.au](http://www.trendtimbers.com.au)

**Opening Hours  
ALL WELCOME!!**  
Mon-Fri 8am-4pm  
Sat 8am-11.30pm  
**Closed**  
Public Holiday &  
Long Weekends

CALENDAR for  
HORNSBY DISTRICT WOODTURNERS INC  
1 Shoplands Road  
ANNANGROVE

2010	SATURDAY
Jan	No Meeting
Feb	13
Mar	13
Apr	10
May	8
Jun	12
Jul	10
Aug	14
Sep	11
Oct	9
Nov	13
Dec	Christmas Tea TBA

Saturdays 11 am to finish (approx 3:30-4:30 pm)  
Please confirm with Convenor.

CONVENOR Lindsay Skinner 9679 1055





## Macarthur Woodturners Inc.

(NSW Office of Fair Trading Incorporation No - INC9885413)

Secretary:  
John D Lees

Postal Address:  
21 Chrysanthemum Ave;  
Lurnea NSW 2170

Phone No:  
(02) 9601 2580  
Mobile No: 0401 528 386

E-mail:  
zjabeco@bigpond.net.au

### BH&E Editorial Submission - November 2009 Edition

#### NEWS

Well - as you can probably tell by the above letter head there has been some changes within our club -

1. We have changed our name to Macarthur Woodtumers Incorporated and had this ratified by Dept of Fair Trading at the end of August - thus for now on we are to be known as *Macarthur Woodturners Inc*
2. Along with a name change also brings a requirement for new Logo and Motto - these are well advanced with final selection to be completed in December 2009
3. Our new committee has actively brought in some changes to the way the club runs its meetings, training procedures, delegation of role responsibility and the standardising of proficiency testing for advancement. All of which has lead to some lengthy debate but overall well received by the members.

#### EVENTS

We have been busy on the BBQ and demonstration front over the past couple of months, in addition to the planned Maxi and Mini days held

5<sup>th</sup> September - All day demonstration at Bunnings Cross Roads

6<sup>th</sup> September - BBQ at Bunnings Campbelltown (Fathers Day)

25<sup>th</sup> September - BBQ & demonstration Bunnings Hoxton Park

8<sup>th</sup> October - Ladies Night demonstration at Bunnings Hoxton Park with Tara Dennis

A good night with some interest shown by customers in joining a Woodturning Club



Some of the team at Ladies Night at Bunnings Hoxton Park - with Tara Dennis

25<sup>th</sup> October - Demonstration at Mater Dei Special School Fete - Camden - a good day which was spoilt by rain - thus bringing the day to an abrupt end by early afternoon



Our stand at the Fete - before the rain came



Smiling Brian - happy to be on a lathe & our table of wares for sale/view

## UPCOMING EVENTS

- November 11<sup>th</sup> - Mini Day at Frank's Place - 48 Engesta Ave, Camden 11.00 am to 2.30pm - cost \$5.00  
November 21<sup>st</sup> - Demonstration at Bunnings Crossroads - 11.00 am to 3.00 pm  
November 29<sup>th</sup> - Maxi Day at Robert Townsend High School; Raby 9.45 am to 3.00 pm - cost \$5.00  
December 6<sup>th</sup> - Xmas party at Frank's Place in Camden from 10.00 am - cost \$5.00

Keep smiling

John Lees  
Secretary





The Wooden Spoon Award goes to our demonstrator Paul Johnston-Walker who showed us his method for making wooden spoons. Paul explained that the spoon shape needs to suit the bowl or pot size and function and that wooden spoons do not burn your hands or mouth when used with hot foods.

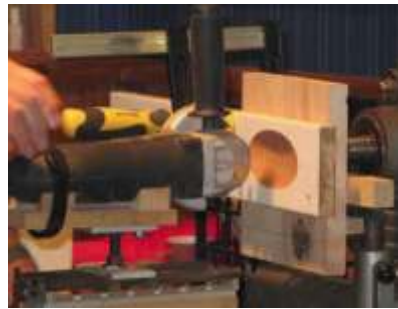
The spoon blade is made first and then the handle turned to suit the requirement.



Paul begins by cutting a board to suit the size of the spoon and marking out the shape he wants.



The board is then clamped to a backing board held in the chuck. Paul uses an Abortech Woodcarver wheel mounted on an angle grinder to form the shape of the inside of the spoon. He has designed a jig to hold the angle grinder and fit it to the lathe bed allowing the grinder to slide. The pivot point for the grinder is critical for determining the spoon shape. Paul had a fine adjustment traveller fitted for better control but that can be dispensed with and still good results can be had.

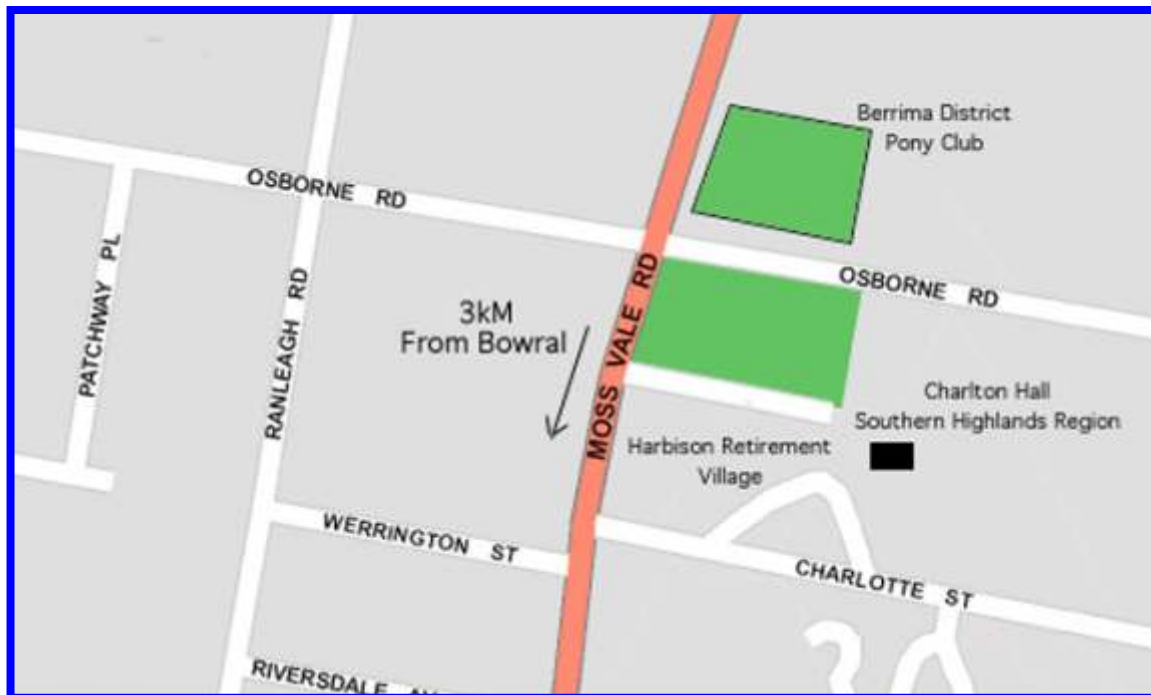


The elliptical spoon shape is cut into the board with the abortech wheel then the board is removed and the handle pattern drawn. The spoon shape is then cut out using a band saw and then mounted on the lathe between centres, the handle turned to the desired shape and the spoon blade roughly turned to remove the sharp edges. At this stage the handle is sanded to the required finish.



Paul then uses a linisher to shape the outside of the spoon and sands it. Finishes if used are vegetable oils – no toxic finishes. Alternate methods for shaping could use a power chisel or Dremel. Thanks Paul for a very interesting demonstration, great work for your first demo.

Southern Highlands Woodies meet on the fourth Saturday of the month at the HarbisonCare Village, South of Bowral. Take the Moss Vale road out of Bowral for about 3km, look for the pony club on your left and HarbisonCare is immediately after it, also on the left. Enter the village and head for the North East corner.



The Saturday meeting normally includes a casual working session, followed by lunch and then a guest demonstrator who provides some expert guidance on some woodturning related issue. Lunch is available at a small cost.

Southern Highlands Woodies also meet every Friday and conduct a 'hands on' meeting where attendees participate and turn with some guidance and assistance from other members. With 7 lathes in use, these tend to be busy and fun days.

The Saturday meetings start at 10.00am and conclude around 4.00pm while the Friday meetings start at 9.30am and conclude at 12.30pm.

# Wood-eze

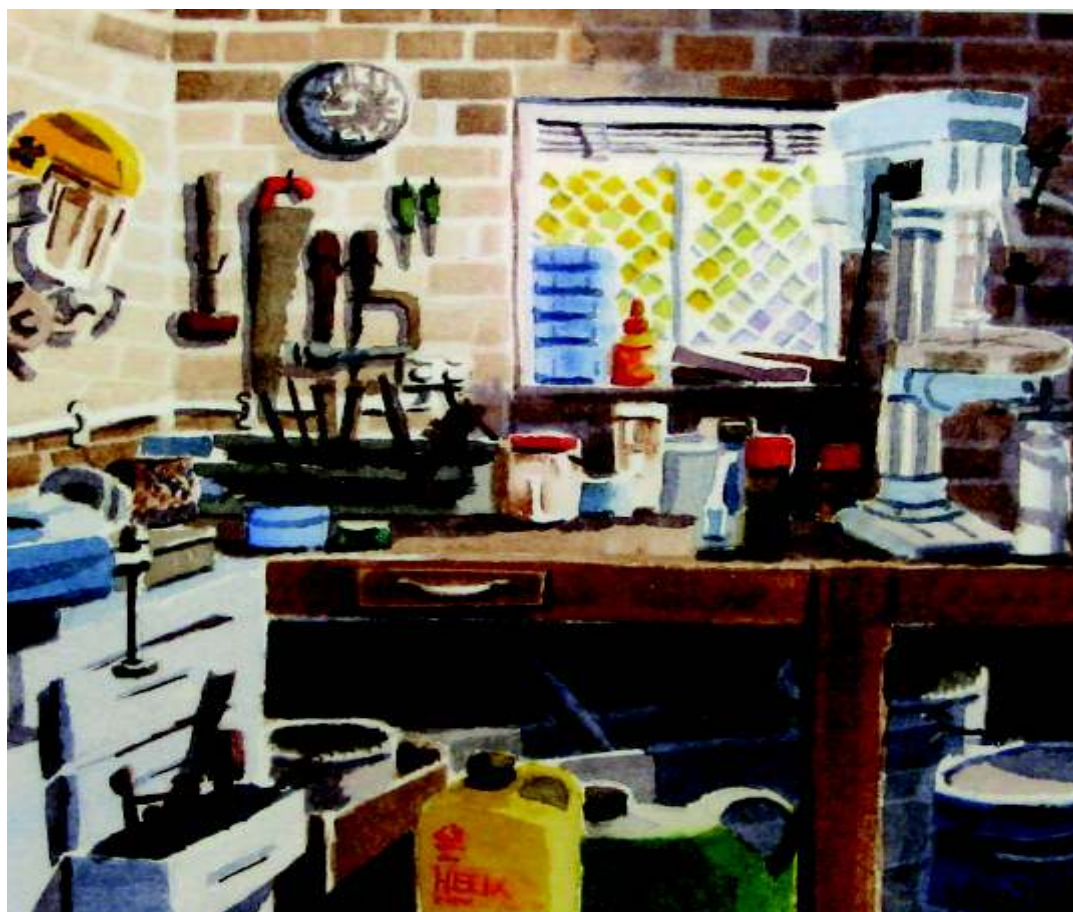
## WOODTURNING SUPPLIES

Leigh & Yvonne Ferguson

130 The Promenade  
Sans Souci  
NSW 2219

Phone 02 9593 4692  
Mobile 0412 901 991  
Wood-eze@optusnet.com.au

Web Site: [www.wood-eze.com.au](http://www.wood-eze.com.au)



### THE WORKSHOP

Yvonne Ferguson

Mail Order Specialists    Visa, MasterCard Accepted

2008 - 2009 CATALOGUE



# Southern Region Craft show October 2009





Show and Tell - Offset Turning





Allan Phelps  
Pacific Maple Platter  
Stained, filled, Satin Estapol



Allan Phelps  
Pacific Maple Platter  
Stained, filled, Satin Estapol



Allan Phelps  
Radiata Pine Platter  
Stained, Sprayed Satin  
Estapol



Allan Phelps  
Pacific Maple Vases  
Stained, filled, Sprayed Satin  
Estapol



Allan Phelps  
Pacific Maple Platter  
Stained, filled, Satin Estapol



Raymond Saich  
Segmented Shape  
Pacific maple



Raymond Saich  
Segmented Vase  
Pacific maple



Lawrence Mifsud  
Square base Vase  
Pacific maple



Brian Brooks  
Pyrograph Rooster  
Burned onto Hoop Pine



Ken Vodden  
Segmented plate  
Jarrah, Fiji Cedar



Ken Vodden  
Segmented plate  
Jarrah, Silver Ash, Wenge



Alan Eipper  
Bottle & Glass Coasters



Ken Vodden  
Segmented bowl



Ken Vodden  
Segmented bowl



Alan Eipper  
Sewing kit



Huns Loomans  
Shoehorn/Back Scratcher  
Wenge & Gidgee



Alan Eipper  
Lidded Box



Huns Loomans  
Lidded Urn  
Maple



Dom Vaticano  
Vase  
Maple



Darryl Lane  
Match Dispenser



Raymond Saich  
Segmented Shape  
Maple



Lawrence Mifsud  
Winged Box  
Maple



Lawrence Mifsud  
Tower  
Maple



Raymond Saich  
Segmented Bowl  
Maple



## SYDNEY WOODTURNERS GUILD INC.

### COMMITTEE MEMBERS 2008/2009

Bill Black	02 9541 2405	President
Alex Bendeli	02 9416 1976	Vice -President
Fred Warr	02 9520 9401	Treasurer
Chris Dunn	02 9607 0940	Secretary
<b>AFFILIATED</b>	<b>ASSOCIATION</b>	<b>REPRESENTATIVES</b>
Hasso Constantin	029724 1203	Bankstown
Stephen Gahan	02 9817 3083	Eastern
Greg Croker	02 9498 2350	Hornsby
Bruce Houldin	02 9542 1087	Menai
Fred Schaffarczyk	02 4889 4316	South. Highlands
Warren Rankin	02 9600 8061	Southern Region
Gordon Mckenzie	02 9451 0058	Northern Beaches
John Jewell	02 9601 2610	Macarthur
Ron Devine	02 9639 6099	Western Syd.
	<b>OFFICERS</b>	
Warren Rankin	02 9600 8061	Public Officer
Warren Rankin	02 9600 8061	Education Officer
Scott Rollo	02 9533 4086	BH & E Editor

### AFFILIATE PRESIDENTS

Kevin Santwyk	02 9644 8366	Bankstown
Graham Tilly	02 9660 3071	Eastern
Lindsay Skinner	02 9679 1055	Hornsby
Paul Kruss	02 9823 8340	Macarthur
Bruce Houldin	02 9542 1087	Menai
John Powell	02 4871 2714	South. Highlands
Frank Williams	02 9587 1396	Southern Region
Meg Webster	02 9450 1032	Syd. Northern
Eddie Catford	02 9837 3311	Western Syd.

Find us on the Web at:  
<http://www.sydneywoodturners.com.au>

E-Mail us at:  
[admin@sydneywoodturners.com.au](mailto:admin@sydneywoodturners.com.au)

### All correspondence to:

**The Secretary**  
**Sydney woodturners Guild Inc.**  
**28 Hayman Avenue**  
**HINCHINBROOK N.S.W 2168**  
**Phone: 02 9607 0940**

### Submissions to the Editor:

**MAIL:** Call for address.  
**EMAIL:** [guildnewsletter@exemail.com.au](mailto:guildnewsletter@exemail.com.au)  
**TEL:** 02 9533 4086 or 0438 569 969

**All submissions will be gratefully accepted. Original photos will be returned but we prefer soft copies if available. Please submit articles in PDF, Word or text files.**